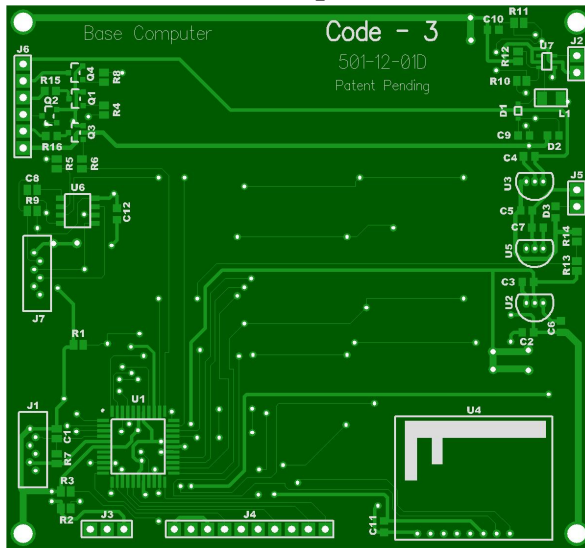
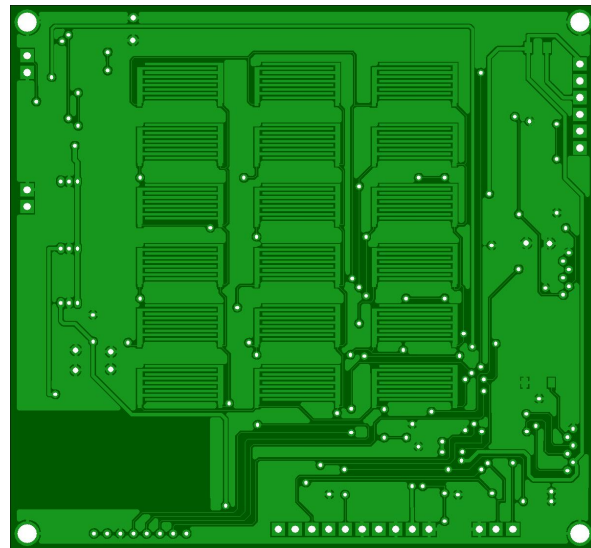


Part Number: Alpha 1 Rev. B

[Top]



[Bottom]



Quantity: 8  
Lead Time: 4 Days  
Unit Price: \$54.92

Shipping: \$49.00  
Tax (7.50%): \$32.95  
Total: \$521.31

#### PCB Dimensions:

Metal Layer Count: 2  
Board Width (in.): 3.50  
Board Height (in.): 3.25  
Board Thickness (in.): 0.062  
Drill Count: 161  
Min. Hole size: 0.025  
Blind/Buried Vias: No  
Minimum Trace (in.): 0.008  
Minimum Space (in.): 0.005

#### PCB Requirements:

Material Type: Standard  
Surface Finish: HASL  
Copper Weight: 1 oz  
Soldermask: Green  
Silkscreen: White  
Has Gold Fingers: None  
Controlled Impedance: No  
Controlled Dielectric: Yes  
Conformal Coating: No

#### DFM Summary (Bareboard):

Level: CRITICAL (54)

- Minimum Clearance: Outer Layers: 50 violation(s)
- Minimum Clearance: Track-Track: 4 violation(s)

Level: ELEVATED (95)

- Mask Slivers: 49 violation(s)
- Silkscreen over Soldermask: 37 violation(s)
- Minimum Clearance: Silk Screen to Board Edge: 9 violation(s)

Level: MEDIUM (114)

- Minimum Clearance: Mask (Pad to Pad): 49 violation(s)
- Minimum Clearance: Mask (Draw to Pad): 50 violation(s)
- Minimum Clearance: Silk Screen (Line to Line): 15 violation(s)

#### Netlist Check Summary:

Netlist Check has not been Performed.